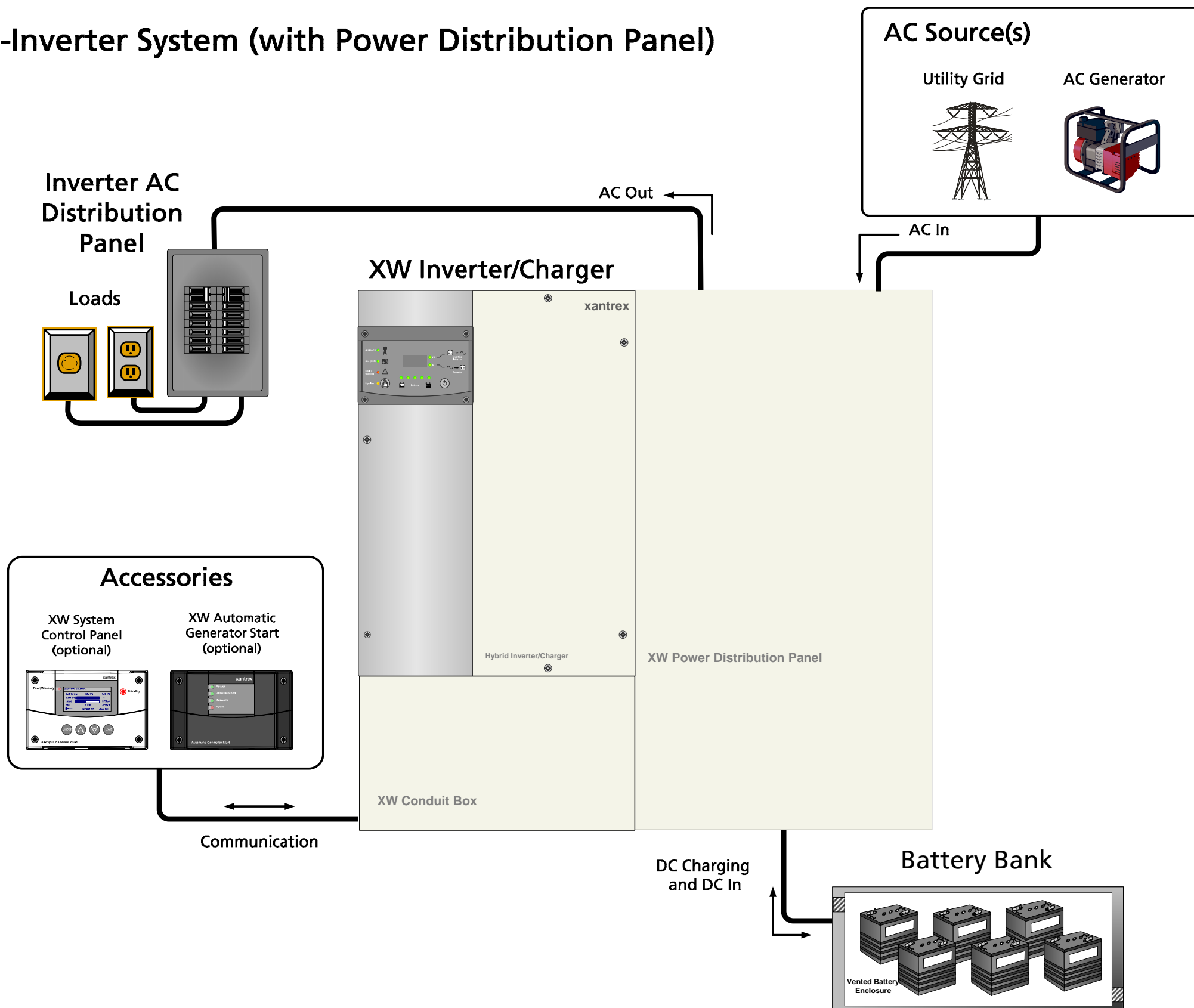
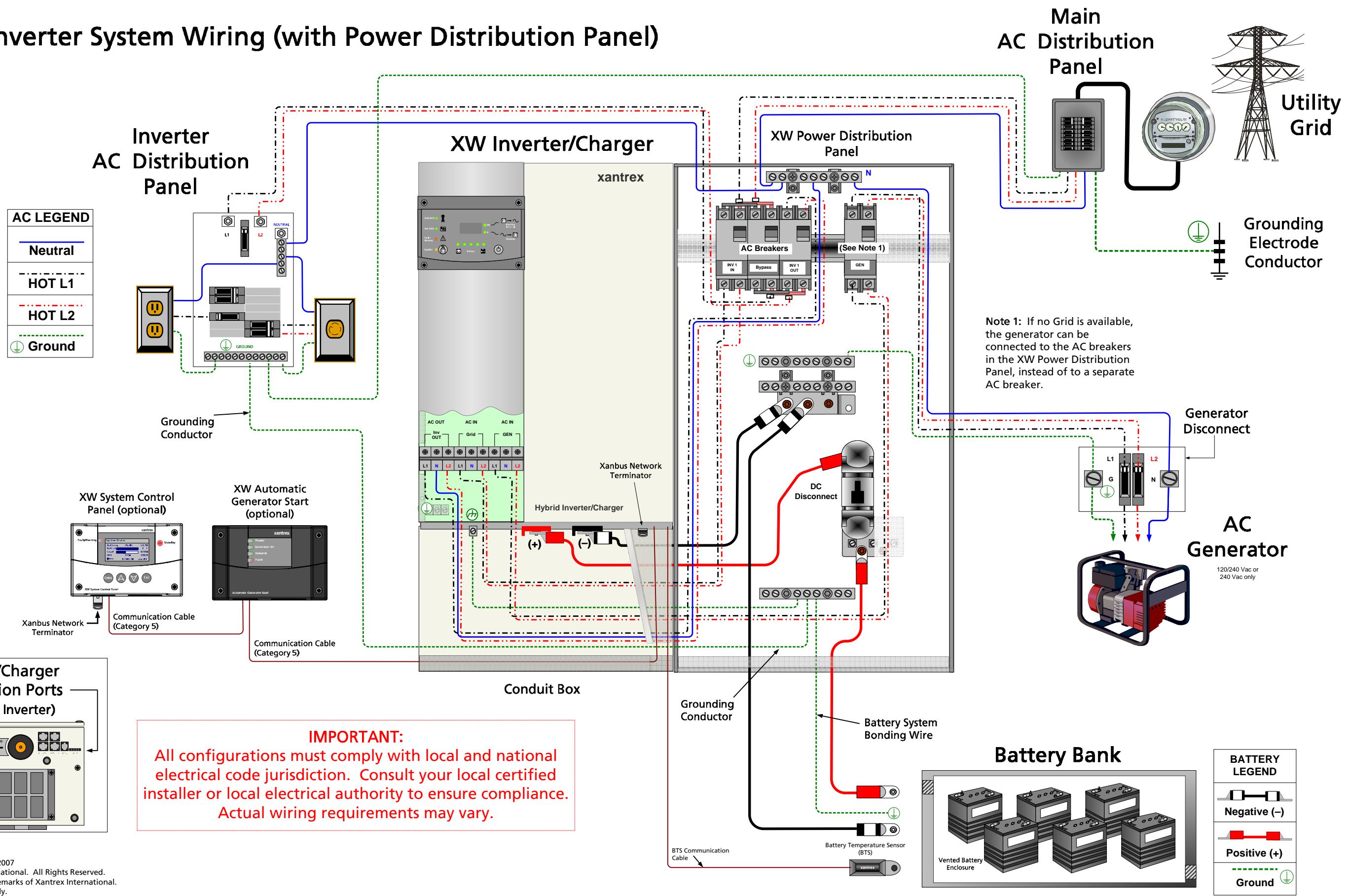


# Single-Inverter System (with Power Distribution Panel)



# Single-Inverter System Wiring (with Power Distribution Panel)



**AC LEGEND**

	Neutral
	HOT L1
	HOT L2
	Ground

**IMPORTANT:**  
All configurations must comply with local and national electrical code jurisdiction. Consult your local certified installer or local electrical authority to ensure compliance. Actual wiring requirements may vary.

